

DATA SHEET

# 6.5X6.5FT



Pack Size (L x W x H)  
16.5 x 17 x 62"

## E2 6.5X6.5FT CANOPY TENT

Equip your commercial-grade Ecotent with your option of tent fabrics and customization options. Your Ecotent Product Expert can assist with any questions, pricing, and product support.

### QUICK LINKS:

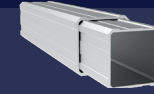
- [Ecotent Website](#)
- [Tent Sizes](#)
- [Technical Details](#)

- [3D Tent Configurator](#)
- [Photo Gallery](#)
- [Warranties & Certificates](#)



### TECHNICAL DETAILS

**E2**



#### Frame Construction

Frame Material	Aluminum
Leg Shape	Ribbed Square
Leg Profile	43x55.5mm (2.5mm)
Truss Profile	28.5x15mm (2mm)
Connecting Elements	Fiber Reinforced Nylon
Footplate Material	Anodized Aluminum
Push-Button Locks	✓ Comfort Press
Corner Brackets	✗

#### Weight

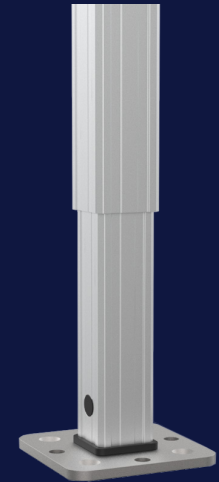
51.3lbs (23.3kg)

#### Transport Bag

✓ Heavy-Duty PVC

#### Frame Height Extensions

✓ Up to 12"



### E2 TEXTILE OPTIONS

Oxford 500D, Oxford 250D, Oxford 250D NFR\* & Recycled Fabric NFR\*  
\*NFR: Non-Fire Rated. All fabrics are certified fire-retardant unless labeled as NFR.

#### TEXTILE PROPERTIES

**Waterproof Rating**  
(DIN EN 20811)

#### OXFORD 500D

✓ 2x Industry Avg.  
2,000mm

#### OXFORD 250D

✓ 1.5x Industry Avg.  
1,600mm

**Fire Certifications**  
B - s1, d0 (difficult to ignite)

NFPA 701, CPAI-84 Sec.6, EN 13501-1:2019,  
CAN/ULC-S109, CA Title 19 Sec. 1237

**Color Fade Resistance**  
(DIN EN ISO 105-B02)

Durable  
blue scale: 4.5-6.5 of 8

Durable  
blue scale: 4.5-6.5 of 8

#### Printing Options

✓ Thermal & Full

✓ Thermal & Full

#### FABRIC COLORS

